

TRV 200 TRV 100

LED Road Traffic Light Signals for Railway Crossings

The Light Emitting Diode road traffic light signal has been developed to be used as a traffic signal for level crossings in harsh road and railway environments. The light unit has an increased safety and reliability compared to traditional signal lights.

- **Increased safety and reliability thanks to high quality LEDs used in the signal**
- **Low maintenance cost because of the long lifetime of the LEDs**
- **Reduced energy consumption compared to traditional incandescent signal units**
- **Self monitoring with 2 optoisolated outputs giving the feedback that LEDs are OK and that the LED unit is turned ON**
- **Two level luminous intensity for day and night mode control**
- **TRV 200 can be installed in a standard 200mm traffic light enclosure. The LED unit is delivered with a 6 meter cable**
- **TRV 200 unit has an extremely robust design with a UV-resistant polycarbonate lens and a back cover produced in aluminium**
- **TRV100 can be installed in a 100 mm traffic light enclosure, 2- and 3-aspect enclosures can be supplied as standard products**
- **TRV100 LED unit is delivered with a 2 m cable**



Main Technical Specification

Visual lens size	Ø 200 mm
Lens material	Polycarbonate
Light source	LED (Light Emitting Diode)
Minimum luminous intensity on optical axis white, green and red	Day 400 cd and Night 100 cd
Minimum luminous intensity on optical axis blue and yellow	Day 200 cd and Night 50 cd
Distribution of the luminous intensity	Wide beam signal type W according to EN12368 (horizontal divergence about $\pm 15^\circ$ @ 50 % intensity)
Colors	White, red, yellow, green, blue and red/white
Signal standards	According to EN12368
Supply Voltage	20 - 32 V DC, nominal 24 V DC
Protection class of the unit housing	IP 66
Weight	800 g
Temperature range	-40 ° - +40 °C (EN 12368 Class C)
Power consumption	8 - 13 W in the day mode 3 - 5 W in the night mode
Control inputs	2 optoisolated inputs: On/Off and Day/Night
Feedback outputs	2 optoisolated outputs: LEDs OK and Unit On
Overvoltage protection at Voltage supply	Transient protection with MOV and short circuit protection
Protection for control inputs and feedback outputs	4 kV isolation and transient protection with MOVs
Unit connection cable	SAB SD 200 C 12x0,5 mm ² / length 6,0 m
Traffic light enclosures	One, two and three aspect housings available

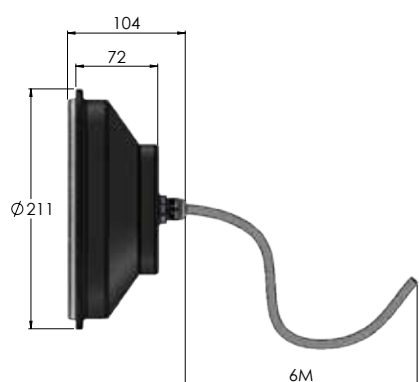
Product

200 mm, 24 VDC interface

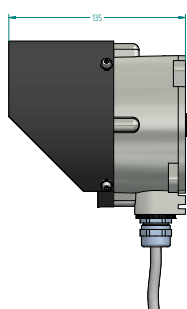
TRV 200W	white
TRV 200R	red
TRV 200G	green
TRV 200Y	yellow
TRV 200B	blue
TRV 200RW	red/white

100mm, 24 VDC interface

TRV 100W	white
TRV 100R	red
TRV 100G	green
TRV 100Y	yellow



TRV 200



TRV 100